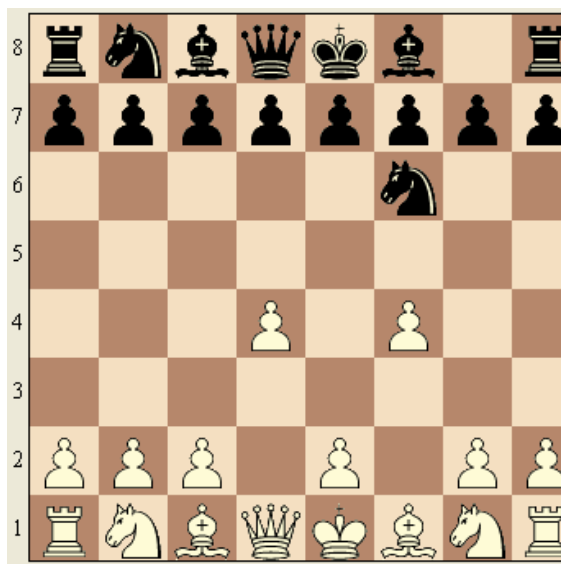


# THE CANARD LESSON

1. d4 Nf6
2. f4



What are some observations you notice immediately about this opening with the very silly name?

---

---

---

---

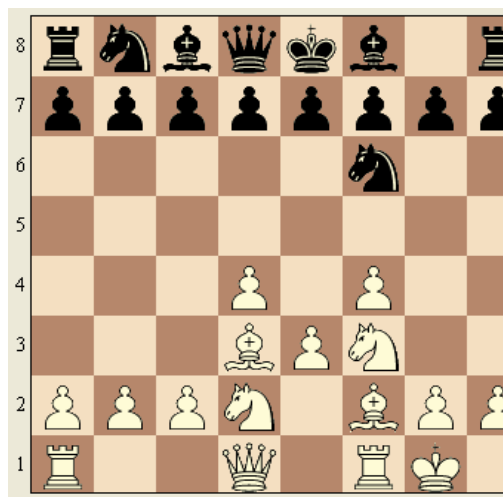
---

---

---

What about White's dark squared bishop? What is the definition of a bad bishop again?

A bad bishop is a bishop that is on the same color as the center pawns.  
(especially if they are



fixed, but remember, even though you can always move them out of the way of the bishop, each pawn move is a tempo -- how many tempos is worth a pawns again? Three, so use your moves sparingly!)

This might be a good opening to transpose into a stonewall formation.